

DO NOT SCALE DRAWING. CHECK ALL DIMENSIONS ON SITE.
 ALL RIGHTS RESERVED.
 © ENE AMP & PARTNERS HONG KONG LIMITED.

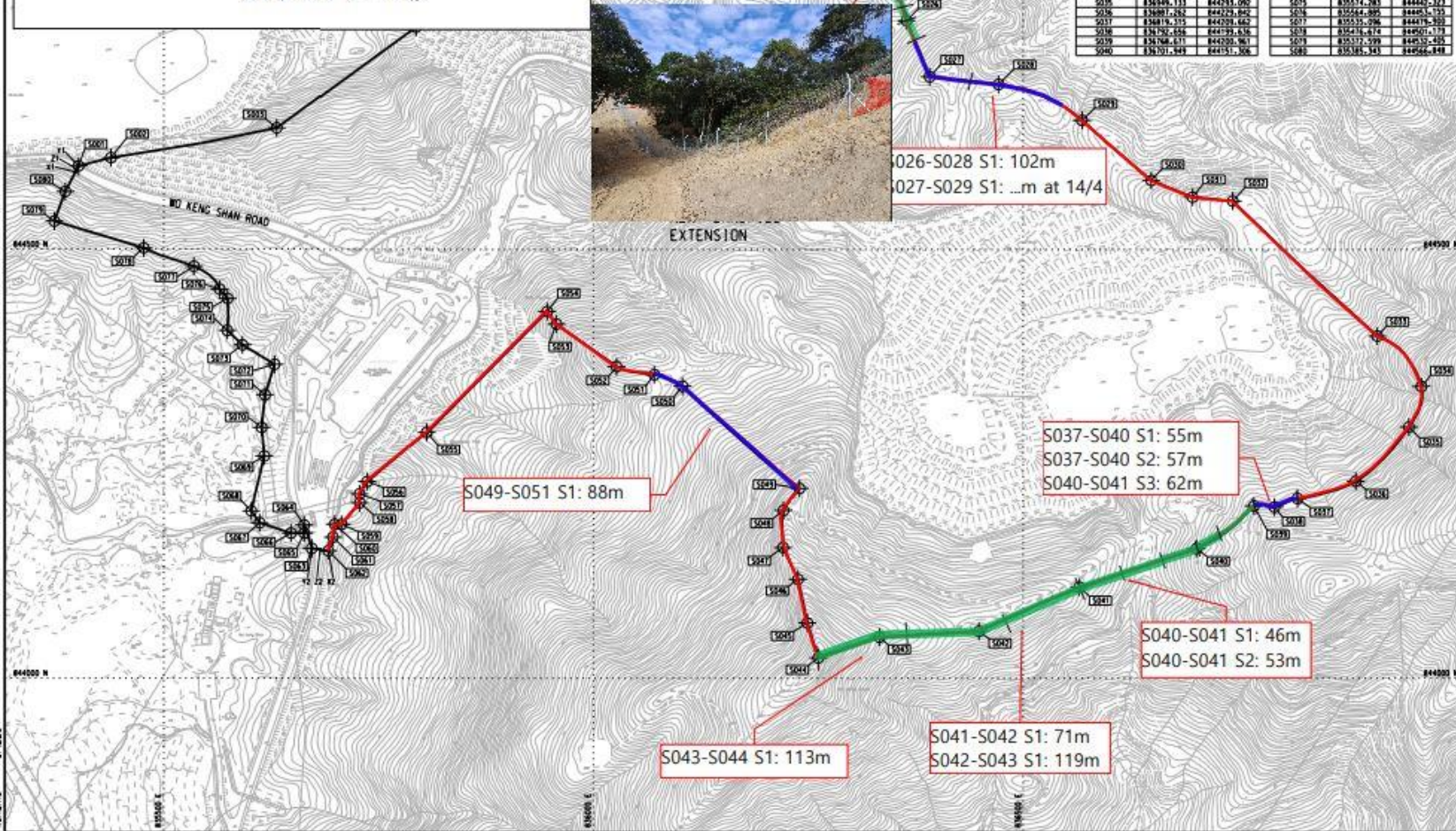


SB Fencing Progress Report as @ 13.3.2023

Start Date: 11.1.2023

Legend

- Proposed fencing length = 3055 m
- Completed footing 1252/3055 m = 41%
- Completed chain link fence 1006/3055 m = 33%



CO-ORDINATES FOR SITE BOUNDARY

SETTING OUT POINT	EASTING	NORTHING
S001	835400.763	844596.681
S002	83476.439	844596.228
S003	83531.400	844641.024
S004	83579.642	844752.456
S005	83676.959	844879.715
S006	83758.265	844938.566
S007	83771.578	844949.837
S008	836212.283	845045.827
S009	836071.622	845071.072
S010	83612.265	845115.203
S011	836212.283	845202.132
S012	836296.244	845282.456
S013	836981.064	845349.446
S014	836986.244	845356.234
S015	83671.658	845353.993
S016	836146.485	844883.803
S017	836176.396	844961.955
S018	836211.023	844947.723
S019	836296.244	844932.212
S020	836294.713	844912.675
S021	836296.244	844882.156
S022	83612.248	844875.463
S023	836136.358	844846.516
S024	836136.358	844846.428
S025	836136.358	844833.702
S026	836136.358	844766.873
S027	836136.358	844731.454
S028	836136.358	844702.580
S029	836136.358	844655.735
S030	836136.358	844620.612
S031	836136.358	844581.038
S032	836136.358	844536.490
S033	836136.358	844491.086
S034	836136.358	844445.724
S035	836136.358	844393.062
S036	836136.358	844342.892
S037	836136.358	844293.662
S038	836136.358	844242.838
S039	836136.358	844193.961
S040	836136.358	844145.306

SETTING OUT POINT	EASTING	NORTHING
S041	836582.887	844106.358
S042	836448.443	844064.135
S043	836332.773	844048.500
S044	836281.595	844032.718
S045	836249.241	844024.518
S046	836218.241	844115.480
S047	836220.480	844152.506
S048	836212.176	844167.739
S049	836212.283	844171.358
S050	836103.489	844166.447
S051	836070.891	844154.689
S052	836026.843	844141.517
S053	835956.335	844131.726
S054	835944.240	844127.911
S055	835936.399	844124.110
S056	835736.615	844236.425
S057	836121.882	844215.710
S058	835736.112	844204.403
S059	835706.353	844176.372
S060	835698.933	844176.738
S061	835696.895	844166.917
S062	835687.380	844146.362
S063	835672.232	844131.583
S064	835668.311	844116.479
S065	835664.443	844106.397
S066	835648.526	844106.327
S067	835641.414	844101.518
S068	835637.144	844104.567
S069	835636.871	844104.637
S070	835631.597	844104.507
S071	835624.396	844104.251
S072	835623.967	844104.206
S073	835618.892	844104.118
S074	835614.895	844104.025
S075	835614.783	844103.923
S076	835614.895	844103.725
S077	835614.783	844103.603
S078	835614.674	844103.479
S079	835614.566	844103.352
S080	835614.458	844103.228

CO-ORDINATES FOR VEHICULAR ACCESS

SETTING OUT POINT	EASTING	NORTHING
11	835297.108	844589.614
12	835452.161	844596.681
21	835298.934	844933.141
22	835691.380	844146.162
23	835672.232	844151.163
24	835691.380	844159.363

LEGEND

- SITE BOUNDARY
- SETTING OUT POINT

0	ISSUE FOR TENDER	SS	12/20
Rev	Description	By	Date
<p>Consultant ARUP 奧雅納工程顧問 One Amis & Partners Hong Kong Limited</p>			
<p>Project title Contract No. EP/SP/77/15 North East New Territories Landfill Extension</p>			
<p>Drawing title SETTING OUT DETAILS OF SITE BOUNDARY</p>			
Drawing No.	215523/01/016	Rev.	0
Drawn By	Date	Checked By	Approved By
Scale	1:2500	Status	TENDER
COPYRIGHT RESERVED			
環境保護署 Environmental Protection Department			